

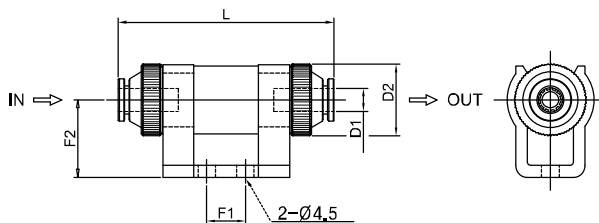
Line Vacuum Filter (LV-filter)

- Simply pushing the tube into the LV-filter (no other operation is required)
- Excellent filtering (minimum particle, 10 micron)
- Easy to check and replaceable filter element inside



Operating specifications

| Model | Tube size (O.D) | Removal efficiency (μ) | Filtration area (mm ²) | Working temperature | Weight (g) | Filter Element Model |
|----------|-----------------|------------------------------|------------------------------------|---------------------|------------|----------------------|
| VTF-0706 | 6 | 10 | 7,5 | 0 °C ~ +60 °C | 25 | VTFE-0706 |
| VTF-1208 | 8 | 10 | 12,5 | 0 °C ~ +60 °C | 39,5 | VTFE-1208 |



(mm)

| Model | L | D1 | D2 | F1 | F2 |
|----------|------|----|-------|----|----|
| VTF-0706 | 55,5 | Ø6 | Ø18,5 | 10 | 20 |
| VTF-1208 | 65,2 | Ø8 | Ø22,5 | 14 | 44 |

Line Vacuum Filter (LV-filter)

These filters provide a cost effective in line vacuum filtration method. The 6mm push fit version is useful for individual lines particularly with the Oneline pump & Multiple stack pumps.

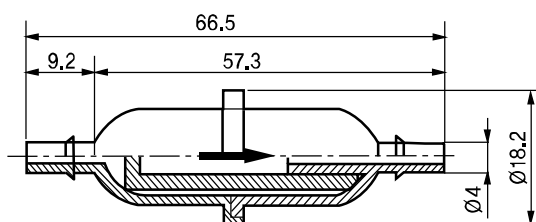
The 3/8" Version can be screwed directly into the Mini type vacuum pump as well as any other port using a 3/8"-BSP connection, when used with the mini pumps & midimultiple pumps it provides a very compact set up.



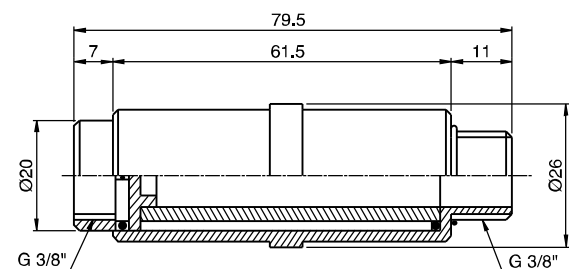
Operating specifications

| Model | Port Size | Internal Volume (cm ³) | Removal efficiency (μ) | Material | Working temperature | Weight (g) |
|----------|------------|------------------------------------|------------------------------|----------|---------------------|------------|
| VTF06-IN | Ø4 (inner) | 4 | 20 | PP, PE | 0 °C ~ 80 °C | 4 |
| VTF38-IN | 3/8" | 20 | 20 | PP, PE | 0 °C ~ 80 °C | 14 |

VTF06-IN



VTF38-IN



[Measure unit : mm]